

Primary with Mathematics:

Key features of the mathematics specialist route include:

- Exploration of your personal mathematics background, the aims and values of mathematics education and the importance of being a champion and advocate for mathematics
- Two half-day sessions, focusing on your role as a mathematics specialist and the leadership and management of mathematics in primary schools
- A twilight session once per term, that focuses on teaching challenging mathematics topics
- An immersion day once per term, in which you will take part in a lesson study at a partnership school
- The opportunity to:
 - Teach mathematics to more than one age range
 - See mathematics teaching at Key Stage 3 and in the Early Years, in order to understand the progression of the subject

What we are looking for in a potential trainee teacher:

- A passion for and dedication to teaching and the importance of education
- The ability to develop positive relationships with students
- A patient, caring, and kind disposition
- Ability to develop a knowledge of all learners
- Ability to engaging all pupils in learning
- Resilience and optimism



“Training to be a teacher through L.E.A.D. Equate was the best decision I ever made because from day one I was truly valued as part of the staff team. I felt entirely supported by my school based mentor, the University and the Alliance and fully prepared as an early careers teacher.”

- Sarah Lees Huntingdon Academy

For further information please contact:

Stacey Williams
e. stacey@equatetsa.co.uk
t. 01522 214459

Early Careers Leader for L.E.A.D. Equate Teaching School Alliance or Rebecca Riley L.E.A.D. Equate ITT Coordinator for Alliance Schools
e. rebecca@leadequatetsa.co.uk
t. 0115 915 6841

To find out more about L.E.A.D. schools please visit:
www.leadacademytrust.co.uk/schools

To learn more about what L.E.A.D. Equate can offer whilst you are training, visit:
www.leadequatetsa.co.uk/itt-overview/

Initial Teacher Training Application Process

Trainee

- Apply through UCAS Teacher Training using the ‘Apply’ system, found on their website at www.ucas.com/postgraduate/teacher-training/how-apply
- Input LEAD Equate TSA – Alliance/Provider/Train code 1DK
- Input course code 26KS (primary) OR 3F35 (primary with mathematics)

University

- Application forms are received by the University of Nottingham
- Applications are screened and successful candidates invited to attend an interview at the University of Nottingham.
- If successful at University interview, candidate details shared with L.E.A.D. Equate Teaching School Alliance

L.E.A.D.

- Successful candidates are contacted by L.E.A.D. Equate Teaching School Alliance and notified of next steps and details of interview and school-based activity in a L.E.A.D. School (usually next day)
- Following the L.E.A.D. Equate interview, candidates are informed of their outcome

University

- University confirms the offer and updates the UCAS system
- University maintains regular contact with trainees

Trainee

- Trainees will be informed of their host school and given contact details in order to arrange a school visit before the end of term
- Trainees will attend the L.E.A.D. Equate Teaching School Alliance Induction Event in July 2021.
- The university will send details of the course commencing

Initial Teacher Training School Direct 2021/22

What will it achieve?

By training to teach with the L.E.A.D. Equate Teaching School Alliance you will gain:

- A PGCE from the University of Nottingham
- Qualified Teacher Status
- Up to 60 Master's credits (towards a 180 credit MA Education degree)
- The development of the unique skillset and attributes needed to become an early careers teacher in the current educational climate.

We offer initial teacher training, in partnership with the University of Nottingham for the Primary Phase across our L.E.A.D. Equate Alliance Schools across the City of Nottingham.

Entry Requirements - Primary

- A good initial degree in any subject
- GCSE's in English, Maths and Science, grade 4 (C) or above
- Evidence of your commitment to, and enjoyment of, working with children and young people
- For the Primary with Mathematics route, a grade C
- A-Level or equivalent is needed.



Our virtual open afternoons are:

Wednesday 10th February 2021, 2-3pm
Wednesday 28th April 2021, 2-3pm

Please email stacey@equatetsa.co.uk to book on, meet the team and find out more!

For further information visit the Nottingham University website:
www.nottingham.ac.uk/education/study/teacher-training/primary or www.leadequatetsa.co.uk

'Working Together to L.E.A.D. the Highest Outcomes for All'

 @LEADEquateTSA

 LEAD Equate Teaching School Alliance

What does it involve?

You will be placed in a school within our Alliance. University days are spread throughout the year. These days are an opportunity to work with primary and secondary trainees and the sessions will form an integral part of the work you do in school. You will be part of a large cohort of beginning teachers exploring the school curriculum and how to make it accessible and enjoyable to all pupils. You will have a mentor assigned by the school. You will also be allocated a university tutor who will work closely with you and your mentor. From the beginning of the course, which starts at the end of August, you will be regarded as a member of staff but also as a beginning teacher. You will attend development days, consultation sessions and extra-curricular activities.

In the second term you will undertake a placement in a second school. This is an opportunity to learn within a different context and share your experiences with other trainees.

Why a schools direct route with L.E.A.D. Equate?

At the L.E.A.D. Equate Teaching School Alliance we are committed to high quality training that impacts on the learning experiences of every child's education. We work closely with the University of Nottingham to design and develop an innovative Initial Teacher Training programme linked with our specialism of high quality teaching in a variety of educational settings. All trainee teachers within our alliance meet half termly to engage with our enhanced and enriched curriculum. This is delivered by outstanding practitioners from our schools. This is an opportunity for you to consider your development as a teacher and reflect upon practice within different settings. Past trainees have found these sessions invaluable and a majority of trainees have gone on to secure successful teaching positions within one of our 25 Trust based schools.



Why the University of Nottingham?

The University of Nottingham has been involved in teacher education for over 120 years, their postgraduate Initial Teacher Education provision is one of the largest in the country.

University tutors working with our trainees were successful and innovative teachers in schools and are now experienced teacher educators, committed to developing the next generation of teachers.

They have a strong emphasis on emotional wellbeing, supporting beginning teachers to develop their own identities, take ownership of their own professional development and embed work ethics that enable them to thrive and enjoy teaching as a profession.

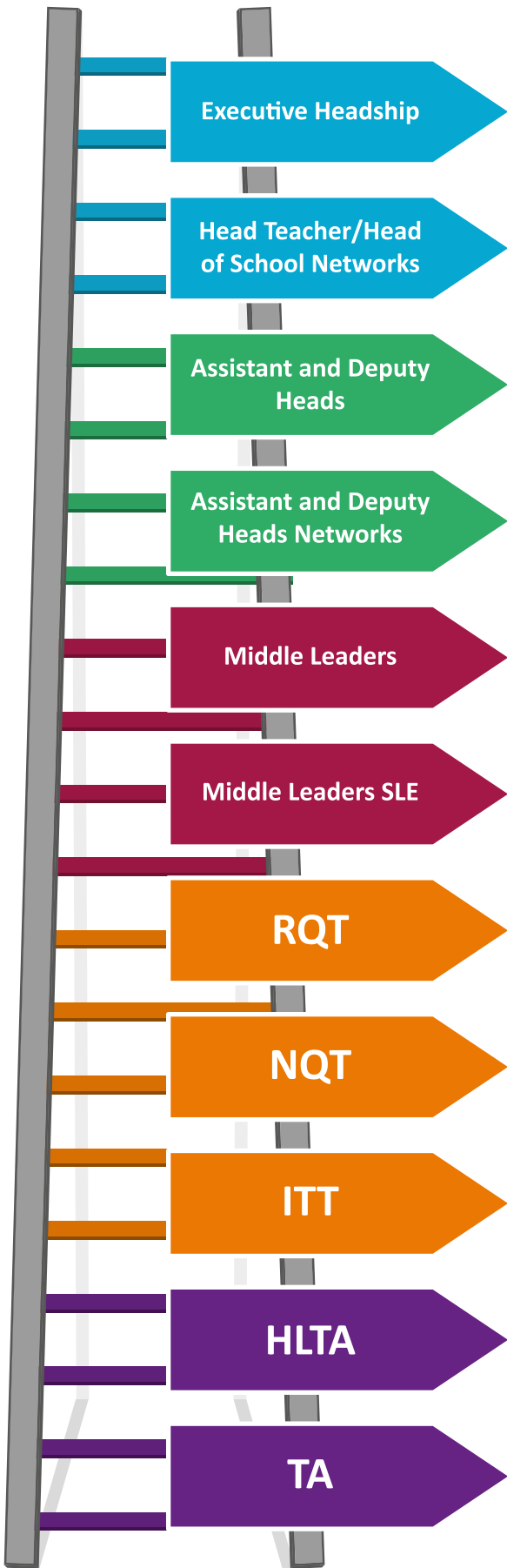
The training year:

University days are spread throughout the year. These days are an opportunity to work with primary and secondary trainees and the sessions will form an integral part of the work you do in school. You will be part of a large cohort of beginning teachers exploring the school curriculum and how to make it accessible and enjoyable to all pupils.

You will have a mentor assigned by the school. You will also be allocated a university tutor who will work closely with you and your mentor. From the beginning of the course, which starts at the end of August, you will be regarded as a member of staff but also as a beginning teacher. You will attend development days, consultation sessions and extra-curricular activities.

In the second term you will undertake a placement in a second school. This is an opportunity to learn within a different context and share your experiences with other trainees.

The practical experience is underpinned by theoretical approaches that are discussed and explored during University based sessions. There is a focus on both 'Schools and Society' and 'Teaching and Learning' and your assignments will ensure that these aspects are closely considered in relation to your teaching in school.



Programme Outline	Qualification
<p>*NPQEH Nationally recognised qualification for the Head teacher of multiple schools.</p> <p>*NPQH is a nationally recognised programme based around: effective school coaching, driving whole school improvement with a blend of face to face, online learning and web conferences, with a nine-day placement in another school.</p> <p>*Heads Up! How will you establish yourself as a new Head Teacher?</p> <p>What will your values and vision for the school be and how will they be communicated?</p>	NPQEH NPQH
<p>*Heads Networks - provide the opportunity to discuss current educational issues with colleagues, access to and time to talk about education research, the opportunity to bridge the gap between innovation and academic research, time, 'out of school' to reflect upon, review and evaluate whole school issues, the opportunity to exchange ideas, experience and expertise, all with control over the agenda.</p>	
<p>*Moving up to Headship- Aspiring Heads Programme for Primary and Secondary</p> <p>*NPQSL is a nationally recognised programme based around: the challenges for developing as an effective senior leader, using data analysis for a school improvement project, leading change, effective monitoring and evaluation and leadership styles.</p> <p>*Range of Development courses –Leading a vision, Leading a team, Having difficult conversations, performance management, developing a strategic view, being effective, building leadership capacity, creating culture, change management.</p>	NPQSL
<p>*Deputy /Assistant Forums - provide the opportunity to discuss current educational issues with colleagues, access to and time to talk about education research, the opportunity to bridge the gap between innovation and academic research, time, 'out of school' to reflect upon, review and evaluate whole school issues, the opportunity to exchange ideas, experience and expertise, all with control over the agenda.</p>	
<p>*NPQML is a nationally recognised programme based around: the challenges developing as a middle leader, a school improvement project and leading and managing change.</p> <p>*Impact Leadership is subject leader course will run from October to May over six half day sessions. It is suitable for subject leaders (core and foundation) who want to ensure that their leadership achieves the maximum possible impact on improving teaching and learning. Sessions are a mix of theory and practical activities.</p>	NPQML
<p>*SLE Training SLE s are experienced and outstanding middle and senior leaders, recruited by Teaching Schools are skilled in helping other leaders in their own context.</p> <p>*Teaching to the Max! gives good and outstanding teachers a set of high level skills and strategies that enable them to become consistently and sustainably outstanding. This course is multilayered according to experience.</p> <p>*Lead Learners</p>	SLE accreditation
<p>*Taking Teaching to the next level Twilight sessions providing a chance to share ideas/projects with other practitioners, network, discuss and collaborate on new thinking and ways of working.</p> <p>This is an opportunity for all colleagues who work in a teaching capacity to benefit from professional dialogue with colleagues and marry theory with practice in order to teach consistently good lessons over time.</p> <p>*RQT training for teachers in their 2nd year onwards</p>	RQT L.E.A.D TSA Partnership Certificate
<p>*NQT Courses are open to any NQTs and are based on: Working with Adults, Beyond the classroom door, having a work life balance, planning for outstanding teaching and learning</p> <p>*NQT Induction Programme (6 sessions) – Focusing on: Maths, English, science, SEND, managing behaviour and assessment. These include learning walks, lesson observations, pupil interviews and book scrutiny.</p>	Appropriate Body
<p>*School Direct Initial Teacher Training is an exciting opportunity for exceptional graduates who show a real passion for pursuing a career in teaching. We offer practical, 'hands-on' programmes designed to nurture the talents of future generations of outstanding teachers.</p>	ITT - PGCE/QTS (with masters credits)
<p>*HLTA status is a recognised progression route for school support staff. The two day face-to-face preparation course explains the HLTA standards and the HLTA assessment process and fully explains how to put together the required portfolio of evidence.</p>	HLTA
<p>*TA programme is a bespoke layered training programme designed to up-skill experienced teaching assistants to ensure they have a greater impact on the progress and outcomes of pupils. Attendees demonstrate increased self-confidence in their roles and ability to make a positive impact in their schools.</p> <p>The programme of learning is based on the EFF recommendations for the effective use of additional adults.</p>	L.E.A.D TSA No formal accreditation

L.E.A.D.

- **Lead** – To ensure the development of yourself as a leader, bringing the best out in you as a teacher and potential leader and influencer in education who is able to facilitate pupils as leaders of their own learning.
- **Empower** – Within our L.E.A.D. Academy Schools, teachers are empowered to have high aspirations for their career development. We nurture and challenge you to take responsibility, make decisions and work collaboratively to ensure you grow in confidence, knowledge and resilience.
- **Achieve** – We believe in achievement in its broadest sense and that the enjoyment of learning is crucial to success. Our school based mentors and Alliance schools are fully committed and dedicated to work towards, acknowledge and celebrate success.
- **Drive** – We will provide the very best training for our teachers. We value hard work, dedication and commitment to the teaching profession and ensure that the training we deliver is underpinned by high quality research and impact based practice. We are consistently evaluating and updating systems and processes in light of new developments.