



L.E.A.D. Equate



'Working together to
L.E.A.D. the highest
outcomes for all'

TRUST NEWS No.14
January 2023

WELCOME BACK...

At the start of this new term, we hope you are feeling refreshed and inspired after a well-earned rest.

We are excited to welcome some nationally recognised educators who will be delivering on the DfE approved programmes, in person, at the L.E.A.D. Teaching School Hub venue.

We equally look forward to welcoming you to the online or in-person events at our training hubs in Nottingham, Sheffield, or Leicester in the coming weeks.



READING FLUENCY FOR UPPER KS2 AND KS3

Recent research has suggested that, whilst many children are 'catching up' post-pandemic, Year 2 pupils are – on average – three months behind with their reading. The gap between disadvantaged pupils and their non-disadvantaged peers has also increased, reaching six months of progress in reading for the average Year 2 pupil and nine months of progress in reading for the average Year 3 pupil (EEF, 2022).

To support schools with their approach to reading fluency and with overcoming these challenges, Alex Quigley, former Deputy Headteacher, Director of the Huntington Research School, and author of *Closing the Vocabulary Gap* and *Closing the Writing Gap*, will be delivering a face-to-face session on **Thursday 19th January 2023, from 10am-3pm**. The focus will be on 'developing reading fluency'. If you attend the event, you will receive the second ticket free of charge for your school. Please find further details and the booking link [here](#).



Are you currently focussing upon the effective Implementation of your Curriculum?



We will be hosting Kate Jones at the Teaching School Hub, renowned author of several books on retrieval practice and curriculum implementation

On **Monday 30th January 2023 (9.30am-3.30pm)** Kate Jones will be delivering valuable professional development on how to make the most of retrieval practice as a learning tool. This is relevant for any teachers - from ECTs to senior leaders - who wish to deepen their understanding of this key learning strategy. You can find out more and book your place [here](#):



National College videos & webinar



We hope you have been enjoying the newly launched version of the National College website. We have put together two 'walkthrough' videos to help with navigating the new website. You can find the first [here](#).

This video gives you a 'tour', shows you how to access the admin area (in 'tools') and also signposts the new 'government feed' and 'channels'.



The second video shows you how to set up a watchlist on the new website. You can view this [here](#).

This month, we want to shine a light on a fantastic National College webinar from Haili Hughes.

Haili explores strategies for 'supporting academically driven, disadvantaged pupils in English'.

You can watch and share the webinar [here](#).



Ofsted Update/Webinars

We have been working closely with the Bright Futures Teaching School Hub, designated across the Manchester region. They are hosting a series of Ofsted updates and webinars online and have kindly offered to extend the invitation to Lincolnshire Schools. If you are interested in attending please click on your chosen event.



Take Control of your own Ofsted Inspection

Wednesday
25th January

Preparing for Ofsted as a Curriculum Leader

Tuesday
31st January

Preparing for Ofsted as a Curriculum Leader

Wednesday
21st June

Take Control of your own Ofsted Inspection

Friday
30th June

Recent Research/ DfE Updates/Think Pieces for Staff Meetings

Please click for details

Learning Should be Hard

Reading: Pulling out the Bricks: Deconstructing the House

Writing through Art and Design



New Early Years Online Resources to promote the Home Learning Environment/2023 Early Years Foundation Stage (EYFSP) handbook

Online resources to promote the importance of the home learning environment in the Early Years, with a specific focus upon boosting children’s language and socio-emotional development has been produced [here](#).

These resources are based upon the NHS Better Health Start for Life website with a full range of evidence-based, detailed and accessible activities for parents and children together at every stage between birth and 5 years old. There is the opportunity to connect parents to local support mechanisms within this site. Equally this associated [link](#), designed for stakeholders hosts a range of flyers and poster to promote effective communication between adults and children.

The **2023 EYFSP handbook** has been published [here](#). This provides guidance for schools when they complete the EYFSP assessment for children at the end of reception year and is designed to help teachers make accurate judgements about each child’s level of development.

Guide to support schools implementing tutoring effectively

In the Autumn term, the EEF published a guide to support school leaders to implement tutoring effectively in their setting. Based on the best available evidence, it focuses on three core principles, including aligning tutoring with curriculum and how to select pupils.

Follow this [link](#) to read this.

EDI & Protected Characteristics - Resources and Updates

In supporting schools to develop their approach to protected characteristics and equality, we have produced a monthly resource for teachers.

Please find this month’s newsletter [here](#).



EDI Calendar as a Resource for Schools

The Teaching School Hub team has produced calendars to support leaders in identifying national events across the academic year which could be used to support the pupils in learning about equality and diversity. Please see the January and February calendars in the links below:

January

February





ECF



Do you have an ECT starting induction in January 2023?

Sign up closes for the January 2023 cohort on 28th February 2023.

TO SIGN UP, PLEASE FOLLOW THE STEPS BELOW.

How does my school sign up to the ECF Full Induction Programme?



STEP 1

Register your ECTs on the Manage training for Early Career Teachers Service by clicking [here](#).

To access a step-by-step guide to set up your school's ECF-based training programme, click [here](#).



STEP 2

Register for the Early Career Professional Development Programme (EC PDP) otherwise known as the Full Induction Programme (FIP) with Education Development Trust (EDT) by clicking [here](#).

Schools already partnered with EDT and accessing the Early Careers Professional Development Programme (EC PDP) for their ECTs and Mentors do not need to complete the Expression of Interest (Eoi) each time they register participants.

How does my school sign up to the AB?



STEP 3

To register with L.E.A.D. Teaching School Hub's Appropriate Body services: Click [here](#).

If your school does not appear in the drop down menu, please email Rachael Viscomi – rachael@leadtshub.co.uk or call 01522 214459.

If you have any questions or want further information about L.E.A.D. Teaching School Hub's ECF or AB Provision, please visit our website or contact:



Teaching School Hub ECF & Appropriate Body Lead
Stacey Williams
stacey@leadtshub.co.uk



Teaching School Hub ECF Administrator
Rachael Viscomi
rachael@leadtshub.co.uk

Please note:
Schools must sign ECTs up with an AB.

January 2023 Training Session

Due to cohort size and location, the decision has been made to move the January 2023 cohort sessions online. Please find a copy of the most up to date ECF Local and Regional Training Sessions 2022-2023 [here](#).

Reminder – Importance to book

L.E.A.D. Teaching School Hub ECF team would like to remind schools of the importance of reminding participants to book themselves onto the events via accessing the 'Events Calendar' on the online platform [here](#). Failure to do so may result in participants being turned away from a training venue on the day due to venue capacity.

Agendas for September 2021 Regionals

Please see the agendas for the Regional events coming up this month.



ECT YEAR 1 Regional Events

Tuesday 17th January 2023
9am-4pm
at Lincolnshire Showground, Epic Centre, Grange-de-Lings, LINCOLN LN2 2HA

Wednesday 18th January 2023
9am-4pm
at The Downer House Hotel, Manor Estate, WOODHALL SPA LN10 4PY

Thursday 19th January 2023
9am-4pm
at Springfields Events & Conference Centre, Camel Gate, SPALDING PE12 6ET

Time	Agenda
9.00-9.15	Welcome and Introductions
9.30-10.30	Every Teacher a Teacher of SEND
10.30-10.45	Break
10.45-11.45	Misconceptions and Deliberate Practice
11.45-12.45	Lunch
12.45-1.45	Structuring lessons for progress
1.45-2.45	Every Teacher a Teacher of Literacy
2.45-3.45	Oracy
3.45-4.00	Close

ECTs can book via the online platform [here](https://www.leadshub.co.uk) or please contact Rachael Viscomi - rachael@leadshub.co.uk

TO BOOK
CLICK
HERE



MENTOR YEAR 1 Regional Training Day

Tuesday 31st January 2023 OR Thursday 2nd February 2023

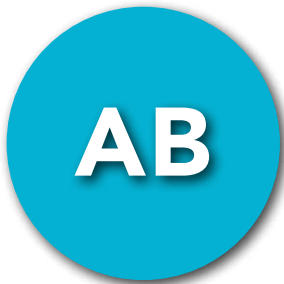
KEYNOTE SPEAKER: Halli Hughes

Halli Hughes is Head of Education at IRIS Connect and Principal Lecturer in mentoring and PD and Teacher Development Mentor Lead at the University of Sunderland. She is also a former English teacher, Head of Department and Senior Leader. She has completed three Masters degrees and is now doing a Doctorate in Education. She is passionate about attracting English teachers into the profession and encouraging students to study English in FE and HE. In addition to delivering mentor CPD across the world, she also runs workshops in schools across the UK, with the most able learners, particularly those from disadvantaged backgrounds, to raise aspirations and train staff to ensure that they are challenging pupils and developing their pedagogy to meet their needs. In her spare time, she has written three education books and is currently writing the fourth and fifth for large education publishers, as well as writing for the TES and other publications.

Time	Agenda
9.00-9.15	Welcome and Introductions
9.15-10.45	Keynote - Halli Hughes - Head of Education at Iris Connect and Author of Mentoring in Schools
10.45-11.00	Break
11.00-12.00	Deepening Instructional Coaching
12.00-12.45	Lunch
12.45-1.45	Supporting your ECT with SEND
1.45-2.45	Managing Challenging ECTs
2.45-3.45	Managing Exceeding ECTs
3.45-4.00	Close

Mentors can book via the online platform [here](https://www.leadshub.co.uk) or please contact Rachael Viscomi - rachael@leadshub.co.uk

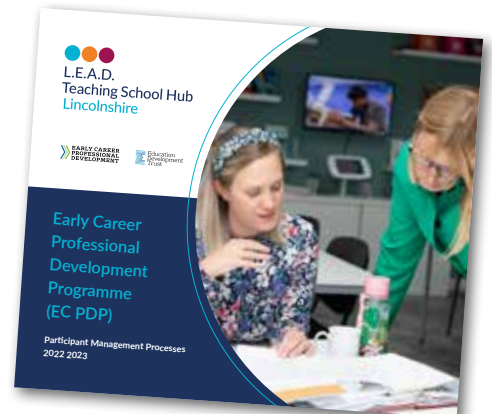
TO BOOK
CLICK
HERE



Participant Management Guidance

L.E.A.D. Teaching School Hub ECF Team have produced a 'one stop guide' for schools with regards to any changes to the Early Careers Professional Development Programme.

We hope that schools can use this guide to support any changes in the first instance, before needing to contact the Hub. To download a copy, please click [here](#).



**Please note that this guide is likely to change with revised DfE systems and processes and we will ensure that we communicate to schools when any changes are made.*

Appropriate Body Services (AB Services)

THANK YOU!

The L.E.A.D. Teaching School Hub AB Team would like to thank schools for the Autumn term progress review and assessment submissions. All that were submitted prior to the deadline have been reviewed and written feedback should have been received. We thank schools who referred to the 'Progress and Assessment Review Guidance' to support the process. For future reference, the 'Progress Review Guidance and the Assessment Review Guidance' can be found on ECT Manager [here](#).

Resources tab – Guides – Progress Review Guide / Assessment Review Guide.

It was apparent from the reviews that the Early Careers Professional Development Programme is continuing to have a positive impact upon our early career teachers' development and progress towards the Teachers' Standards.

Further information about **ECF and AB Services** [HERE](#)

Coming up...

STATUTORY INDUCTION INFORMATION

Statutory Induction Information Event – January 2023 Induction Start Thursday 2nd February 2023, 4-5.30pm

This session is most appropriate for Induction Tutors, who are responsible for overseeing the Induction process, and ECTs. Mentors are warmly invited to find out more about the process and their involvement.

To book onto the event, please [here](#).

AB Twilight Drop In

Wednesday 8th February 2023, 3.45-4.30pm

APPROPRIATE FOR ALL COHORTS

Colleagues from any party involved in the statutory induction process are welcome to attend, as a scheduled opportunity to ask questions to a named contact from the AB. **These will all take place online.**

Links are available from Rachael Viscomi or Stacey Williams

Key Information



L.E.A.D.
Teaching School Hub
Lincolnshire

Appropriate Body: L.E.A.D. Teaching School Hub
www.leadtshublincs.co.uk / Tel: 01522 214459



Teaching School Hub
Appropriate Body Lead
Stacey Williams
stacey@leadtshub.co.uk



Teaching School Hub
Appropriate Body Administrator
Rachael Viscomi
rachael@leadtshub.co.uk

Lincolnshire Hub Delivery Partner Appropriate Body Named Contacts

To support the provision of the AB services across the county, we work with a number of partners



Horncastle Education Trust
Veronica Addis
Veronica.addis@horncastleeducationtrust.org



Kyra Anthem Trust
Lisa Yates
lyates@kyraanthemtrust.uk



Learn Teaching Centre
Sarah Robertson
sarah.robertson@learnteachingcentre.co.uk



Voyage Education Partnership
Suzie Pell
suzie.pell@voyage-education.org



Keystone
Denise Parker
denise.parker@keystonemat.org





EDT and TDT are pleased to share that they have received a high response rate to the end of programme surveys completed by the first cohort of specialists. Across both lead providers, **95% - 99% stated that they were very satisfied / satisfied** with their overall programme experience. Those specialists that completed the final assessment should hear the results at the end of January 2023.

Last chance to apply for a place on an NPO programme across 2022/2023:

The deadline for applying for NPQLT (Leading Teaching); NPQSL (Senior Leadership) and NPQH (Headship) is **Wednesday 1st February 2023**.

Please note that the deadline for application to NPQLL (Leading Literacy) and NPQEYL (Early Years Leadership) is **Monday 16th January 2022**.

We currently have

478

studying for NPOs through the Teaching School Hub.

83

Specialists completed their NPO in November this year

Why complete an NPO through the Teaching School Hub?

The journey does not and should not end once the specialists have completed their National Professional Qualification. We are determined to support schools and leaders with ensuring that those studying a National Professional Qualification are supported throughout their studies AND also once they have completed their programme.

We will be inviting Specialist and Leadership Participants to join Alumni groups for NPQBC, NPQLT, NPQLTD, NPQLL and NPQEYL. Each Alumni group will meet three times a year, twice online and once face to face. Each participant that joins the Alumni group will gain a logo to share on their school website, identifying that there are specialists and leaders in the respective specialist areas at that setting.

THE AIM OF THE ALUMNI GROUPS IS TO:

- ensure that the learning and impact in schools is sustained
- that relationships between specialists and leaders continue to grow and the networks continue to build
- share progress specialists and leaders have made in their schools with each other, as they continue to impact on their respective settings
- ensure specialists and leaders continue to access further expertise and learning
- track the impact of the programme on specialists and leaders and their schools as they continue to develop in their career as part of the golden thread
- continue to support specialists and leaders as they progress in their career, sharing aspects that may be of interest including resources, innovation and research.

Thank you to all Head Teachers that have completed the Baseline Case Study as well as those specialists that have completed this [Google Form](#). The information we gain from these will feed into the Alumni groups as well as into the NPOs themselves and wider CPD. **All those that complete the Baseline, Midpoint and End of Programme Case Studies will receive a voucher for £125 worth of CPD for 2023/24.**

FULLY FUNDED NPQS

As we welcome the new term, L.E.A.D. Teaching School Hub is delighted to have received a significant number of applications for the NPQ programmes. L.E.A.D. Teaching School Hub is designated to serve ALL Lincolnshire Schools.

These are **fully funded by the DfE** and adapted to the context of leadership in Lincolnshire.

To secure your place or to find out more please do not hesitate to contact us or access the information below.



National Professional Qualification for Executive Leadership (NPQEL)

[VIEW BROCHURE](#)

[CLICK HERE TO APPLY](#)



National Professional Qualification for Headship (NPQH)

Already a senior leader, head of school or headteacher looking to develop yourself professionally? Why not try the NPQH?

[VIEW BROCHURE](#)

[CLICK HERE TO APPLY](#)

National Professional Qualification for Senior Leadership (NPQSL)

Are you an aspiring Senior Leader? Why not try an NPQ for Senior Leadership?

[VIEW BROCHURE](#)

[CLICK HERE TO APPLY](#)



National Professional Qualification for Leading Teaching (NPQLT)

Are you a subject lead or would you like to become one? Do you lead a year group, key stage or phase?

[VIEW BROCHURE](#)

[CLICK HERE TO APPLY](#)

L.E.A.D. TEACHING SCHOOL HUB AND PARTNERS WILL BE WORKING WITH THE TEACHER DEVELOPMENT TRUST – TDT.



NEW - National Professional Qualification for Leading Literacy (NPQLL)

Do you lead Literacy in your school? Have you always had an interest in the teaching of reading or developing children's writing? This is the programme for you!

[VIEW BROCHURE](#)

[CLICK HERE TO APPLY](#)

NEW - National Professional Qualification for Early Years Leadership (NPQEYL)

NPQEYL is for participants qualified to at least Level 3 with a full and relevant qualification who are, or are aspiring to be Managers of Private, Voluntary and Independent nurseries, Headteachers of school-based or maintained nurseries, Childminders with leadership responsibilities. Further information sessions will be held in the Autumn Term for practitioners who are interested in this NPQ.

[VIEW BROCHURE](#)

[CLICK HERE TO APPLY](#)



Curriculum Hubs



KYRA Research School bridges the gap between research and classroom practice, partnering with schools to improve outcomes for disadvantaged pupils through evidence-informed implementation, robust evaluation, quality CPD and follow-on support.

We run a series of **free** one-hour evidence briefings throughout the academic year. The full schedule is available on our [website](#), with January's sessions focussing on:

Making the Best Use of Teaching Assistants

Tuesday 17th January 2023

[CLICK HERE](#)

Preparing for Literacy

Tuesday 24th January 2023

[CLICK HERE](#)

'Language and literacy provide us with the **building blocks** not just for academic success, but for fulfilling careers and rewarding lives.' The EEF Literacy Guidance reports [here](#) give evidence-based recommendations to help bridge the disadvantage gap and focus on high quality teaching.

Literacy describes a range of complex skills. It includes both word-level skills spelling and word-reading and text-level skills reading comprehension and writing composition. The overall aim of these skills is communication. For an author to communicate their message and a reader to decipher and receive it.

It starts with the need to prioritise communication and language through high quality interactions in Early Years settings through to the importance of the explicit teaching of vocabulary as a golden thread throughout. As James Britton wrote: "Reading and writing float on a sea of talk." (Language and Learning, 1970).

Kyra is looking for 12 schools to use the Embedding Explicit Vocabulary Instruction Programme and provide feedback for future development. This programme draws on high-quality evidence to support staff and build on existing practices for supporting disadvantaged pupils in Years 1 and 2 with low language abilities.

Check out [this flyer](#) for more information

Please subscribe to our monthly newsletter [here](#) and you can follow us on Twitter @KyraResearch

[CLICK HERE](#)



CPD for January and February

Click on your chosen programme below to book



Ensuring Pupils who have SEND Achieve the Best Possible Outcomes

Wed 11th Jan



Delegation and Empowerment

Wed 11th Jan



HR- Probation, Appraisal and Performance Improvement

Mon 16th Jan



Environmental Geography - Creating Global Citizens

Tues 17th Jan



HR- Probation, Appraisal and Performance Improvement

Wed 18th Jan



EAL Subject Leader Development Group

Wed 18th Jan



Developing Reading Fluency

Thur 19th Jan



Pastoral Care

Fri 20th Jan



Sickness Absence Management

Mon 23rd Jan



Maternity and Family Friendly Policy

Tues 24th Jan



Emergency First Aid at Work (LEICESTER)

Wed 25th Jan



Excellence in Mentoring and Coaching

Wed 25th Jan



Emergency First Aid at Work (LINCOLN)

Thur 26th Jan



Subject Leadership and the Education Inspection Framework

Mon 30th Jan



Primary RE Subject Leaders Development Programme

Tues 31st Jan



Unpicking the SEND Review and the Implications for Inspection

Fri 3rd Feb



Primary PSHE Subject Leader Development Programme

Mon 6th Feb



Employment Law Essentials

Tues 7th Feb



Investigation Training

Wed 8th Feb



Fluency: The Missing Ingredient to Confident Readers

Wed 8th Feb



Introduction to Finance and Month End Accounting

Wed 8th Feb



Paediatric First Aid Training (SHEFFIELD)

9th-10th Feb



Writing Moderation All Years

27th, 28th Feb & 1st Mar



Maths Moderation All Years

27th, 28th Feb & 1st Mar